

SOLIS

50 Facelift

STANDARD FEATURES



Engine

Engine Type	Three Cylinder Natural Aspirated Engine
HP Category	50
No. of Cylinders	3
Aspiration	Natural
Cubic Capacity (cc)	2893
Rated RPM (+/-25mm)	2100
Air cleaner	Dry Air Cleaner with Clogging Sensor.
Max Torque (Nm) @ RPM	190@1200
Cold Start	Yes
Exhaust	Underhood Downdraft silencer



Transmission

Drive	2WD/4WD
Clutch	Dual Clutch
Gearbox	8F+2R
Transmission	Synchromesh

Speed (Forward)

Min Speed (km/h)	2.29 @ 2100
Max speed (km/h)	30.09 @ 2100

Brakes

Brakes	Oil Immersed Brakes
Type of actuation	Mechanical
Parking Brake	Independent type

Differential lock

Diff. Lock (mechanical)	Yes, Foot Operated
-------------------------	--------------------

PTO

PTO (rpm)	540
PTO (actuation)	Mechanical

Steering

Steering	Power Steering
----------	----------------

Electrical

Battery	12V,88AH
Alternator	12V, 90A
Seven pin trailer socket	Yes

Hydraulics

3 point linkage	CAT-II
Stay Bars	Adjustable
Hydraulic lifting capacity	1600 kg
Auxiliary hydraulic circuit	2DA
Lift rods	Yes

Safety Switch

Neutral safety switch	Yes
P.T.O Safety switch	Yes

Capacity (Itrs)(+/-5%) approx.

Fuel tank	55
-----------	----

Turning Diameter meter

Without Brakes	7.41(2WD), 9.45 (4WD)
----------------	-----------------------

Tyre

Front	250/85R20 BKT
Front Rear	340/85 R28 BKT

Dimension & Weight(+/-5%)

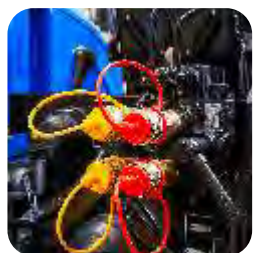
Weight(kg)	1980-2WD, 2200-4WD
Wheel Base (mm)	3820 (2WD/4WD)
Total Length (mm)	3790 (2WD/4WD)
Total Width (mm)	2490 (2WD/4WD)
Hieght (mm) Up to ROPS	2490 (2WD/4WD)
Min Ground Clearance (mm) min	315 (2WD/4WD B/W THE AXLE)
Front Track (mm)	1310-1505 (2WD), 1295-1650 (4WD)
Rear Track (mm)	1420-1880 (2WD/4WD)

Others

Fuel Indicator gauge	Yes
Front Toe Hook	Yes, inbuilt in front weight
Front & rear weights with std. Ballast	Base Weight 72Kg+Front 6X31 Kg and Rear 1X34 Kg on each wheel
Trailer hitch	Swinging Drawbar
ROPS	Yes
FOPS	Optional
Sheet Metal	Rx Major Facelift
Head Lamp	Vertical with Projector Lamps

Optional Features

Tyres	Radial Tyres 2WD: Front 6*16 Rear 340/85R28
Cabin	4WD: Front 250/85R20 Rear 340/85R28
Trailer Brake	Optional- With Verim Cabin ATB



james@tallut.co.uk

07920 101595

International Tractors Limited

H.O: Plot No. 29 and 31, Aggarwal Mall, CBD Ground, Near Karkardooma Court, Delhi-110032 (India). Phone: +91 11 22600700, Fax: +91 11 22377472

Works: Jalandhar Road, Hoshiarpur-146022, Punjab (India). Phone: +91 1882 302220, 302221, Fax: +91 1882 302293, E-mail: exports@sonalika.com , Website: www.sonalika.com.

www.facebook.com/SonalikaTractor | www.twitter.com/SonalikaTractor | www.linkedin.com/groups/Sonalika-Tractor

SOLIS

50 Facelift

MORE POWER
MORE SAVINGS



A Product Of

SONALIKA
INTERNATIONAL